

PART OF SEC. 29-32, T.7N., R.3E., S.L.B.&M.

EVERGREEN PARK SUBDIVISION NO.1

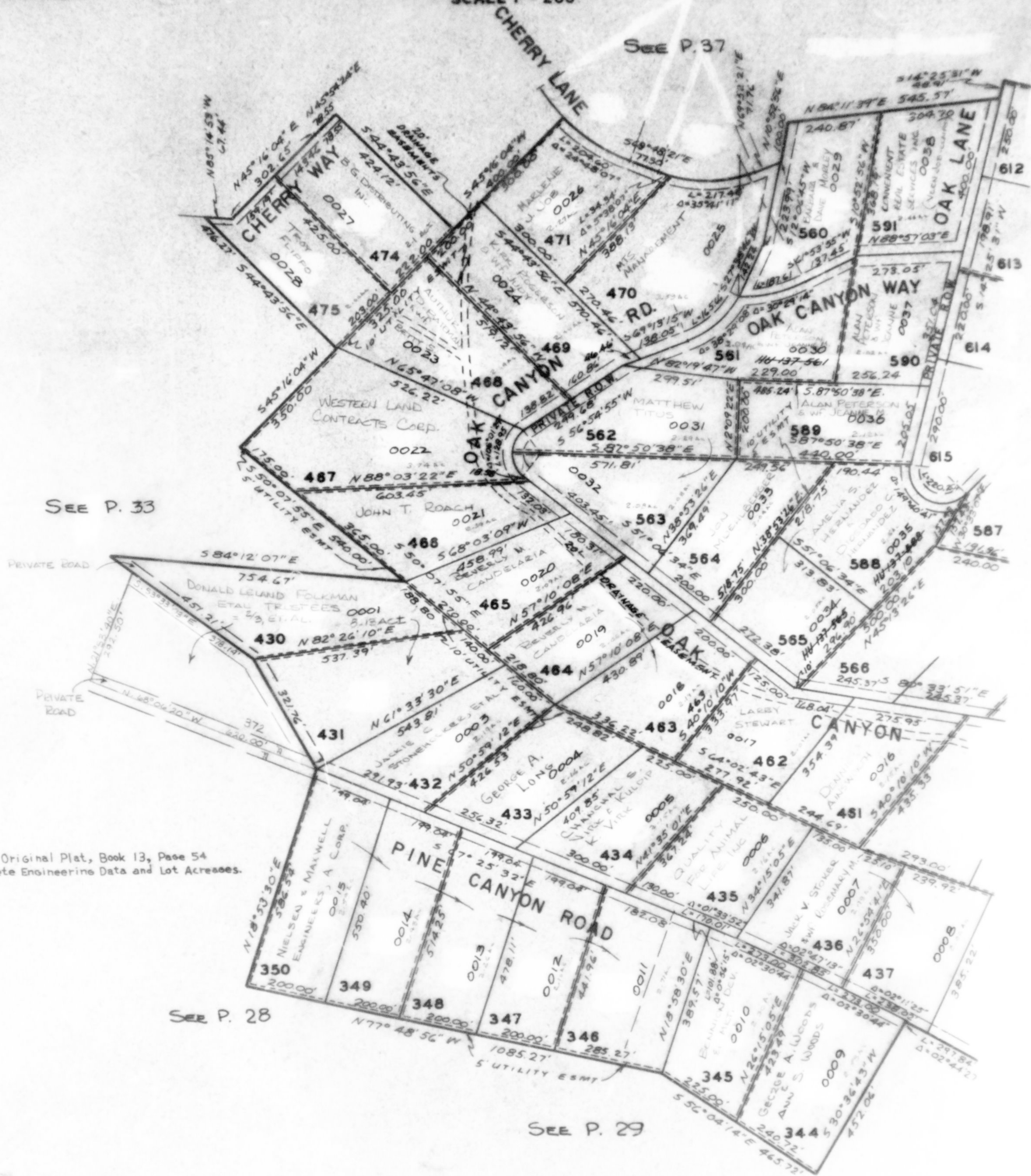
LOTS 344 - 350, 430 - 437, 461 - 471, 474 - 475, 560 - 565, 588 - 591

TAXING UNIT 58

WEBER COUNTY

PREFIX 23-034

SCALE 1" = 200'



SEE P. 37

SEE P. 33

SEE P. 36

Note: See Original Plat, Book 13, Page 54 for complete Engineering Data and Lot Addresses.

SEE P. 28

SEE P. 29